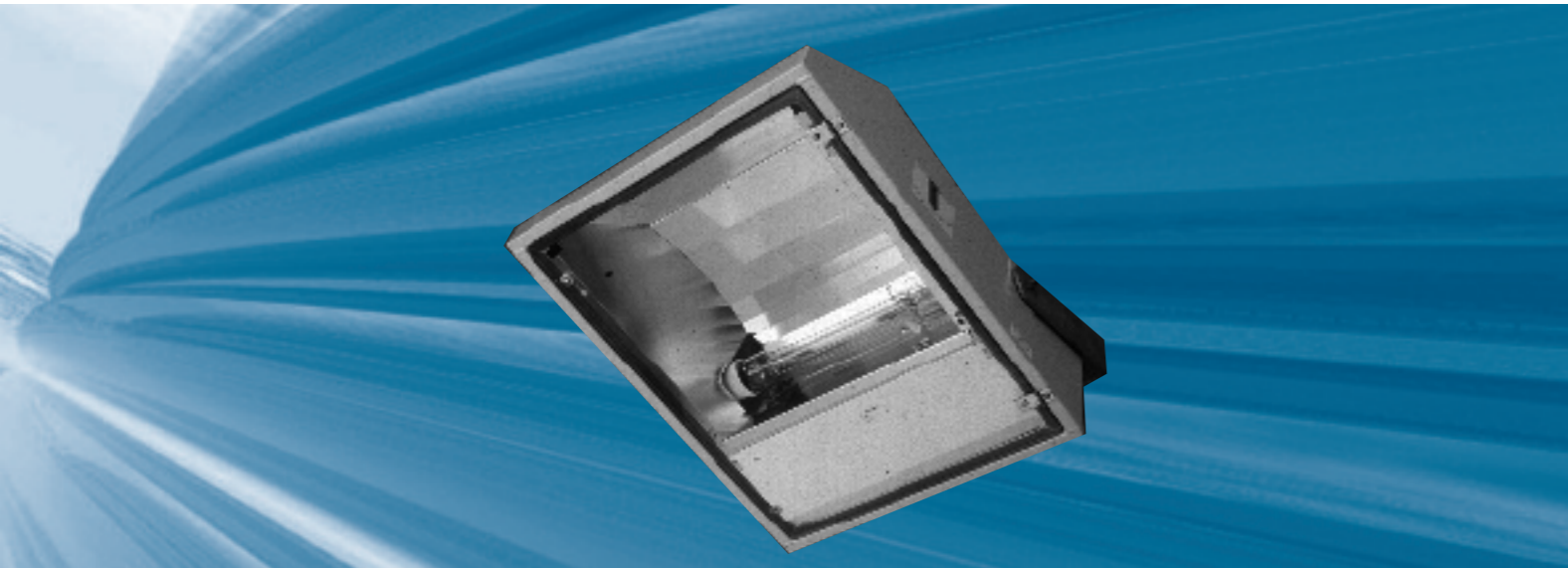
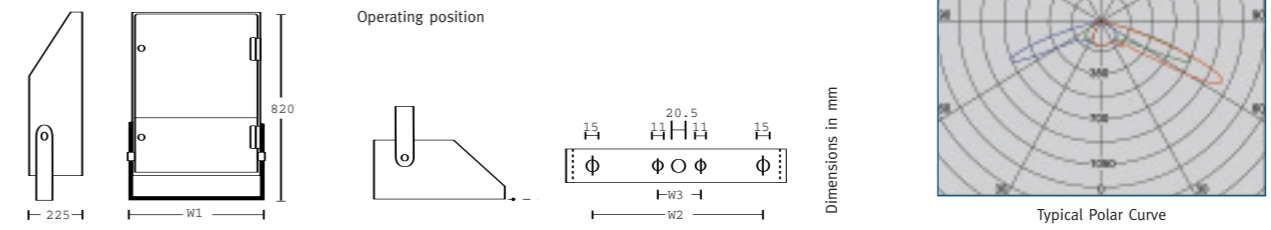


SPACELIGHT IP65

FOR USE IN: General floodlighting, buildings and around glare-sensitive locations



Dimensions and Weights



Type	W1 mm	W2 mm	W3 mm	Weight kg	Windage m ² max side area
150WSON-T/HQI-T	490	400	102	21.0	0.22
250W SON-T/HQI-T	490	400	102	22.0	0.22
400W SON-T/HQI-T	490	400	102	23.5	0.22
600WSON-T	490	400	102	25.6	0.22
2 x 400W SON-T	740	650	-	31.0	0.25
2 x 600W SON-T	740	650	-	36.0	0.25
1000W SON-T/ HQI-T	600	510	-	39.0	0.25

Key Features and Benefits

- **Very tight cut off** Zero light is emitted above the horizontal plane so Spacelight is ideal for glare sensitive areas and minimises light pollution and spillage
- **Tough and corrosion resistant** Spacelight is designed to be tough, corrosion and weather resistant in the worst of locations
- **Asymmetric distribution** The peak at 65° with the front glass horizontal gives excellent ground illumination
- **IP65** Complete protection against ingress of water and dust
- **Precision aiming** Cradle adjustment allows small changes in the beam angle and the floodlight is fitted with an aiming sight
- **Versatile mounting** Spacelight can be mounted on highmasts, columns, towers or building facades
- **Wide lamp range** Will accept lamps 150W to 1000W SON-T or HQI-T

- **Body:** 2mm aluminium
- **Finish:** Powder coated and finished grey polyester textured
- **Cradle:** Galvanised steel
- **Glass:** Thermally toughened
- **Reflector:** High purity aluminium, brightened and anodised
- **Insulation:** Class 1 (must be earthed)
- **Terminals:** Maximum cable size 6mm². Gland 6-12mm OD
- **Standard ballast:** 220/230/240v thermally protected
- **Ambient operating range:** -20°C to +25°C

IP65 Order Codes

Description	CODE
150W SON-T/HQI-T	SL4150
250W SON-T/HQI-T	SL4250
400W SON-T/HQI-T	SL4400
600W SON-PT	SL4600
2 x 400W SON-T/HQI-T	SL5
2 x 600W SON-PT	SL2600
1000W SON-T/HQI-T	SL1KW

To specify state: Robust, corrosion resistant floodlight for use with lamps up to 1kW, for area lighting with an asymmetric distribution and with peak at 65° when mounted horizontally as per WRTL Spacelight range.



WRTL Exterior Lighting Ltd. Waterside Park, Golds Hill Way, Tipton, West Midlands DY4 0PU, UK.
Tel: +44 (0)121 521 1234 Web: www.wrtl.co.uk